

Press Release | Exhibition

Atelier Deshaus, Shanghai
Common Landscape
Re-Cultivating Industrial Sites



80,000-ton Silos Art Centre. © Tian Fangfang.

Exhibition: 1 April – 17 May 2023

Opening: Friday, 31 March 2023, 6.30pm

Venue: Aedes Architecture Forum, Christinenstr. 18–19, 10119 Berlin

Opening hours: Mon 1–5pm, Tue–Fri 11am–6.30pm, Sundays and public holidays 1–5pm, Sat 1 April 2023, 1–5pm

Download press images:

<https://www.dropbox.com/sh/m310nym5cc4zg/AADvoi2kB7Ni8sz1dBEDwM31a?dl=0>

The successful conversion and expansion of abandoned buildings and relics from the industrial past have been the mission of Atelier Deshaus from Shanghai since 2001. The question of how formerly closed industrial complexes can be transformed into new, attractive places for the public is the core theme of this exhibition. It focuses on the transformation along the Huangpu River in Shanghai, whose seamless accessibility as a public space was heralded by Expo 2010 "Better City - Better Life". Aedes is showing seven projects that have used the potential of former industrial sites to bring new functions to the riverbank and to which the residents attach both emotional and cultural significance. The presentation is complemented by two additional buildings in other locations that are also inspired by their immediate surroundings and have recently been completed.

In 2016, Atelier Deshaus was part of Aedes' successful exhibition *Zài Xīng Tǔ Mù - Sixteen Chinese Museums, Fifteen Chinese Architects*.

Aedes

Abandoned production sites and relics of inner-city heavy industry, warehouses, and port facilities can be a huge burden on the sustainable development of a city, especially if they are seen as waste to be disposed of. With its projects, Atelier Deshaus shows how the grey energy used in them can be preserved, at least in parts, through conversion and reconstruction, and how new functions can be assigned. In the face of climate change and the generally far too energy-hungry construction industry, it is also an obvious necessity in China to take an unbiased look at existing buildings. Nevertheless, demolition is still often the priority. Atelier Deshaus counters this with a strategy of minimal intervention that sensitively heralds the transformation of the existing buildings without destroying the historical reminders.

The enormous urbanization push since the 1990s has not only produced more and more new residential areas in Shanghai but also increasingly displaced the industry along the Huangpu River in the last decade. With the conversion of these often huge complexes, new possibilities for the design of a continuous public space for urban society are emerging, especially along the riverbank. As the examples by Atelier Deshaus show, large and small industrial building relics can be cultivated and integrated. New cultural landmarks can emerge from the formerly derelict buildings and structures, which not only address historical aspects but also ascribe entirely new meanings to them, with which social transformations become visible.

The exhibition

The projects are presented in the exhibition with models, plans, photos, and videos. They illustrate Atelier Deshaus' practice with a focus on the conversions along the Huangpu River in Shanghai. This important water trade route also forms the 'narrative thread' in the exhibition design, thus placing the projects on display in a large-scale context. As a special element, short videos developed from social media posts show the appropriation of the architecture and the success of the projects as new cultural sites in the city.

The projects

Major cultural buildings such as the internationally awarded *Long Museum*, the *Modern Art Museum*, the associated *Riverside Walkways*, and the *Riverside Passage*, all of which were created by repurposing the former coal ports with its infrastructure buildings, are shown. Also on display is the *80,000-ton Silos Art Centre*, created from a former grain warehouse, and two smaller private projects: Atelier Deshaus' own office and a neighbouring tea house. In addition, the *Contemporary Art Museum* in Taizhou, which was built largely as a new building in an area of former warehouse buildings, and the recently completed *Upper Cloister*, which is located in the mountainous landscape within sight of the Great Wall halfway between Beijing and Chengde, will be on view.

What the projects have in common is that the architects are careful with what they find, whether it is a picturesque landscape or the harsh legacy of industry. For the architects, the continuation of the existing is more important than a new beginning, which has been the *tabula rasa* of so many building projects in recent years. The respectful upgrading of the existing preserves local and accidentally created landscapes with their micro-ecosystems, which also support the diversity of the metropolitan cultural landscape in the sense of ecological sustainability. Atelier Deshaus sees the projects as carriers of memory and condenses local identity with refined concepts and new uses that both refer to historical Chinese culture and at the same time enable new contexts and functions with the smallest possible intervention that can also serve as a model elsewhere.

Aedes

About Atelier Deshaus

Founded in 2001, Atelier Deshaus is one of the first independent architectural practices in China. The two co-founders Liu Yichun and Chen Yifeng, both studied at Tongji University in Shanghai. Liu Yichun is also a visiting professor at Tongji University in Shanghai and was a regular columnist for Time+Architecture magazine for a while.

The Shanghai-based studio responds in a sensitive way to the rapid urban development in China with its work and is primarily concerned with the construction of public buildings such as kindergartens, schools, and museums. The studio has received international recognition and won numerous awards, such as inclusion in *Architectural Record's 2011 Design Vanguard* list. Its best-known project, the *Long Museum* on Shanghai's West Bund, which is also part of the exhibition, won *Architectural Review's Award for Emerging Architecture*, the *Gold Prize* at the *2016 ASC Architecture Creation Awards for Public Architecture*, the *Honor Award Best in Show for Architecture 2019* from AIA's China Chapter, and the *ARCASIA Awards for Architecture 2020, Gold Winner (Public Amenity: Social and Cultural Buildings)*. The *Shanghai Modern Art Museum and its Walkways* project were awarded the *RIBA International Award for Excellence* in 2021.

Further information:

www.aedes-arc.de

Speaking at the opening

Dr. Kristin Feireiss Aedes, Berlin

Dr. Eduard Kögel Researcher and Curator, Berlin

Liu Yichun Architect and Founder, Atelier Deshaus, Shanghai

Generously supported by

Huasheng Media, West Bund, Aranya

We thank the Aedes Cooperation Partners

Zumtobel, Cemex, Camerich, Erwin Hymer Group

For further information please contact

Julia Schlütsmeier-Hage, Aedes Architecture Forum, +49 30 2827015, jsh@aedes-arc.de

Press Images

Download: <https://www.dropbox.com/sh/m310nym5cc1c4zg/AADvoi2kB7Ni8sz1dBEDwM31a?dl=0>



Long Museum West Bund. © Walter Mair.



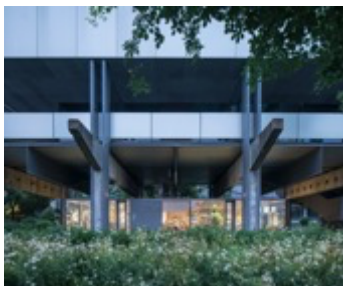
Long Museum West Bund. © Su Shengliang.



Long Museum West Bund. © Walter Mair.



Long Museum West Bund. © Su Shengliang.



Modern Art Museum Shanghai. © Tian Fangfang.



Modern Art Museum Shanghai. © Tian Fangfang.



Modern Art Museum Shanghai. © Tian Fangfang.



Riverside Walkways on Laobaidu Wharf. © Tian Fangfang.



Riverside Walkways on Laobaidu Wharf. © Tian Fangfang.



80,000-ton Silos Art Centre. © Su Shengliang.



80,000-ton Silos Art Centre. © Su Shengliang.



80,000-ton Silos Art Centre. © Tian Fangfang.



80,000-ton Silos Art Centre. © Tian Fangfang.



Riverside Passage. © Tian Fangfang.



Riverside Passage. © Hao Chen.

Aedes



Atelier Deshaus Office on West Bund. © Hao Chen.



Atelier Deshaus Office on West Bund. © Hao Chen.



Atelier Deshaus Office on West Bund. © Hao Chen.



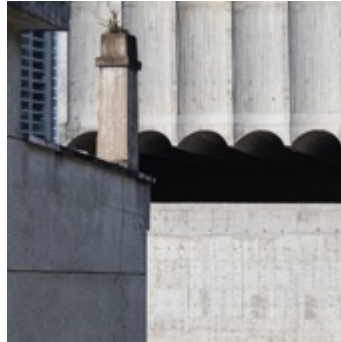
Taizhou Contemporary Art Museum. © Tian Fangfang.



Taizhou Contemporary Art Museum. © Tian Fangfang.



Taizhou Contemporary Art Museum. © Tian Fangfang.



Taizhou Contemporary Art Museum. © Tian Fangfang.



Taizhou Contemporary Art Museum. © Tian Fangfang.



Tea House in Li Garden. © Tian Fangfang.



Tea House in Li Garden. © Tian Fangfang.



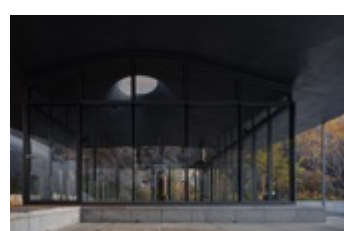
Tea House in Li Garden. © Tian Fangfang.



Upper-Cloister in Jinshan Mountain. © Su Shengliang.



Upper-Cloister in Jinshan Mountain. © Su Shengliang.



Upper-Cloister in Jinshan Mountain. © Su Shengliang.



Upper-Cloister in Jinshan Mountain. © Su Shengliang.



Upper-Cloister in Jinshan Mountain. © Su Shengliang.